

CAMBERWELL  
**ARTS** FESTIVAL  
10-18 JUNE 2023



IT'S

**SHOWTIME!**



JUNE ★ 10TH-18TH JUNE ★ 10TH-18TH JUNE ★ 10TH-18TH JUNE

# WELCOME

TO THE 2023  
**CAMBERWELL**  
ARTS FESTIVAL



**IT'S SPECTACULAR!  
IT'S SURREAL!  
IT'S SE5!  
IT'S SHOWTIME!**



Welcome to the 29th annual Camberwell Arts Festival, when we take art out of the studio and into the street for the UK's longest-running visual arts festival.

Join us for thrills and (paint) spills as this year's programme takes inspiration from Camberwell's legendary music hall heritage and shines a spotlight on the artists and performers who work here today.

From Dan Leno to Una Marson, celebrate the actors, comedians, contortionists, performers and poets who have entertained Camberwell over the years. And visit our launch party and open studio weekend to discover the incredible contemporary artists on your doorstep.

In between, there will be dazzling aerial displays, riotous record shop extravaganzas, silent cinema screenings and incredible interactive installations for everyone.

We hope you'll join us!

To find out more please visit  
[www.camberwellarts.org.uk](http://www.camberwellarts.org.uk)

[www.camberwellarts.org.uk](http://www.camberwellarts.org.uk)  
@ /camberwellartsfestival  
@camberwellarts

**IT'S SHOWTIME**

★ **LAUNCH PARTY** ★

**SATURDAY 10TH JUNE**

MIDDAY-4PM

**CAMBERWELL GREEN, SE5**

Let's get this show on the road!  
Help us launch this year's  
Camberwell Arts Festival at  
our free showstopper party.

Everyone and their dog is invited.  
Make art at family-friendly  
workshops, enjoy artist-designed  
sideshows, listen to local  
musicians, take part in London's  
artiest dog show, and join us  
for afternoon tea.

All of this will be accompanied  
by an expanded Camberwell  
Green Market and Camberwell  
Arts Market (from 10AM-4PM)  
as local artists, designers and  
makers come together  
to celebrate Camberwell.

**ADMIT ONE**

**WHAT'S ON**



**CAMBERWELL SIDESHOW**

MIDDAY-4PM

Frog Morris Presents: a Dog-Show Side-Show Spectacular. From pet portraits to animal extravaganzas, hook-a-duck to tin-can-alley, there are free activities for everyone. He'll be joined by local musicians and buskers, including the Camberwell Community Choir & Lyndhurst Primary School.



**CAMBERWELL WORKSHOPS**

10.15AM-4PM

Join free drop-in creative workshops, including activities led by Camberwell Choir School, Camberwell Scribes, Drawing People Together (with Crafty Old People from Southwark Pensioners' Centre) and a litter-collecting finale with Carolin Meyer.

**CAMBERWELL DOG SHOW**

2PM-3PM

We know they'll steal the show, but we couldn't let Camberwell's canine population miss out on the fun. Just bring your dog to enter, with rounds for agility, best trick, puppies (under 1) and waggiest tail. There will also be a special appearance by the Canine Unit of the London Police Service.

**THE GREAT CAMBERWELL CAKE OFF**

3PM-4PM

Let them eat cake! We're inviting everyone to join us for afternoon tea to wrap up this year's launch. We know there's some great bakers among you so we're looking for Camberwell's best bakers to help us recreate Camberwell in cake. Bring your showstopper creations to the cake tent to share, before 3pm, with prizes on offer for best local legends and landmarks.

**CAMBERWELL ARTS MARKET**

10AM-4PM

Join us for an extraordinary array of artists, designers, makers and up-cyclers with unique artworks for every budget. They'll be joined by traders from the Camberwell Green Market, making this a showcase and celebration of our vibrant food and cultural scene. Full stall information overleaf.  
[www.camberwellarts.org.uk](http://www.camberwellarts.org.uk)





# MARKET TRADERS

As part of our festival launch, the Camberwell Arts Market is joining forces with the weekly Camberwell Farmers Market to bring you the best in local food and art. 10AM-4PM.

[urban-farmers-market.co.uk](http://urban-farmers-market.co.uk)  
[camberwellarts.org.uk](http://camberwellarts.org.uk)



- 705xcLAy
- Ailsa Munro
- Aliomalley
- Alpaca Emporio
- Ana Gallego Illustrations
- Corinne Alexander
- Camille Aboudaram
- Bumble & Earwig
- Camberwell Designs
- Cerb Ceramics
- Creative-Ness Art & Supplies
- Ele.Avra
- Fleur de Trésor
- Gini Bean
- Green Dog London
- Guiding Hand Readings
- Jesse Warby
- Jessy&Jaine
- Julia Scott Art
- Just a Load of Comics
- Kate Diamond
- Katokids
- Knowledge & Kin
- Loganberryart
- Lo Parkin Creative
- London Illustrator
- Lucy Draws Things
- Martha Jacobs
- Maplevtg
- Maria Ceramic Glass
- Michelle Baharier
- Mina&Friends
- Meeka Jewellery
- Mudaliart
- Mustard House
- Mya & Joe
- Past Tense
- Poroban
- Red Faces Prints
- Ricarica
- Rosie Hurley Illustration
- Ruby Bankhead
- Saboon Alee
- Sow London
- Studio Dodge
- The Well Spirit Cafe
- TNK Arts
- Untamed Princess



# EVENTS EVENTS EVENTS

## SATURDAY 10TH JUNE

### THEATRE

#### SOMETIME, SOMEWHERE

GOLDEN GOOSE THEATRE  
146 CAMBERWELL NEW ROAD, SE5 0RR  
6TH-10TH JUNE  
8.30PM

Camberwell's newest theatre - which opened during the pandemic - is already garnering awards, so why not take a gander? Showing during the Festival, Simon MacDonald's play is inspired by the true story of a salon that banned gossip magazines and tabloids in the wake of the Caroline Flack tragedy. It lifts the lid on morality and how our behaviour is reflected through the media that we both feed and consume.

Running time approx. 1 hour

[www.goldengoosetheatre.co.uk](http://www.goldengoosetheatre.co.uk)  
TICKETS £12 (£10 concessions)



## SUNDAY 11TH JUNE



### THEATRE

#### SUPER CHEFS

THEATRE PECKHAM, 221 HAVIL ST, SE5 7SB  
11TH-14TH JUNE  
11AM & 1PM

6-year-old Manny is making his very first guacamole for his dad's welcome home dinner. It's a good thing his mum Valeria is a professional chef and knows a song to help with the recipe. Manny's grandma is preparing the dessert, but Abuela doesn't like boys in the kitchen - after all, it wasn't like that before. But Manny feels differently. Why can't he become a chef? Or a superhero like Mighty Mujer? Or both?! Join in to sing, dance and cook with a Latin American family in London as they celebrate food, question gender roles and work together when the cooking plans are upended! Everyone welcome; ideal for 4-8-year-olds! Schools wishing to book should contact [boxoffice@theatrepeckham.co.uk](mailto:boxoffice@theatrepeckham.co.uk) or call 020 7708 5401. Running time 45 minutes.

[theatrepeckham.co.uk/show/super-chefs](http://theatrepeckham.co.uk/show/super-chefs)  
TICKETS £6

### PERFORMANCE

#### ALICE'S ADVENTURES IN AERIALAND

MYATT'S FIELDS PARK, QUIET GARDEN  
2PM-6PM

Bring a picnic, chair or blanket, and get ready for some spectacular storytelling in this unusual, immersive and off-the-ground take on Lewis Carroll's classic tale. Combining aerial circus with puppetry, verse and music this production is brought to you by The Dot Collective and Longfield Hall Trust. It's designed to be accessible for everyone, including those living with dementia and PMLD.

[www.longfieldhall.org.uk](http://www.longfieldhall.org.uk)  
TICKETS £10-£14



### FILM

#### MR. VALENTINE PRESENTS: SHERLOCK JR. & MÉNILMONTANT

ST GILES CHURCH, CAMBERWELL  
CHURCH STREET, SE5 8RB  
7.30PM (DOORS OPEN 7PM)

Join us for two astonishing silent films, with live piano and organ accompaniment by Ashley Valentine. Released 99 years ago, Buster Keaton plays a film projectionist framed for a crime he didn't commit in *Sherlock Jr.* (1924/45 mins). His only hope is to use his amateur detective skills - and perform the most daring stunts imaginable! Named after the suburb of Paris where it is set, *Ménilmontant* (1926/38 mins/PG\*) opens with a frenzied attack worthy of Hitchcock and follows the story of two girls forced to fend for themselves. This rarely-screened film uses experimental camera and editing techniques, and has been described as an 'impressionist masterpiece'. There will be a bar and interval. Tickets on the door or online.

[musicatstgiles.com](http://musicatstgiles.com)  
TICKETS £10 / £7 concessions



## MONDAY 12TH JUNE

### FILM

#### THE MENU

WHIRLED CINEMA, 259-260 HARDESS STREET, SE24 0HN | 7.30PM-10PM

A much-loved local cinema, hidden away in the railway arches at Loughborough Junction, Whirled is a place to indulge your love of good film in a relaxed and welcoming environment. Showing during the Festival is The Menu, in which an acclaimed chef (played by Ralph Fiennes) prepares a lavish menu with shocking results.

TICKETS £12 (free to members)



### MUSIC

#### EUPHORIA IN THE PARK

BRUNSWICK PARK, SE5 7RJ | 7PM-7.45PM

Join Carolin Meyer in the middle of Brunswick Park to collectively experience euphoric and uplifting music. As a multidisciplinary artist and DJ, who has recently been appointed Creative Fellow at UCL, she is primarily interested in the body and embodiment. Through her experience of transracial adoption (Kurdish/Yazidi to German), she is committed to making work that is viscerally affective and unites people.

## TUESDAY 13TH JUNE



### COMMUNITY

#### ART ASSASSINS AT SOUTH LONDON GALLERY

CLORE STUDIO, SLG, 65 PECKHAM ROAD, SE5 8UH | 5PM-7PM

The Art Assassins are a group of young people, aged between 16-21 years old, who meet every second Tuesday to work with contemporary artists, designers and filmmakers, and create a programme of events for other young people. Together they have directed short films, recorded a radio show, curated an exhibition, developed a video game and much more. To join the Art Assassins please email: [artassassins@southlondongallery.org](mailto:artassassins@southlondongallery.org)

### WORKSHOP

#### WIRE ART WORKSHOP

PECKHAM PELICAN, 92 PECKHAM ROAD, SE15 5PY | 7PM-10PM

Explore the wonderful world of wire art in this workshop led by professional artist Violet Argent. Suitable for all skill levels, from beginners to experienced artists, you'll learn how to shape, twist, and bend wire into complex forms and designs. All materials are provided to enable you to create your own unique wire sculpture.

[eventbrite.co.uk/e/wire-sculpture-workshop-tickets-623899559377](https://eventbrite.co.uk/e/wire-sculpture-workshop-tickets-623899559377)  
TICKETS £13



## WEDNESDAY 14TH JUNE



### PERFORMANCE

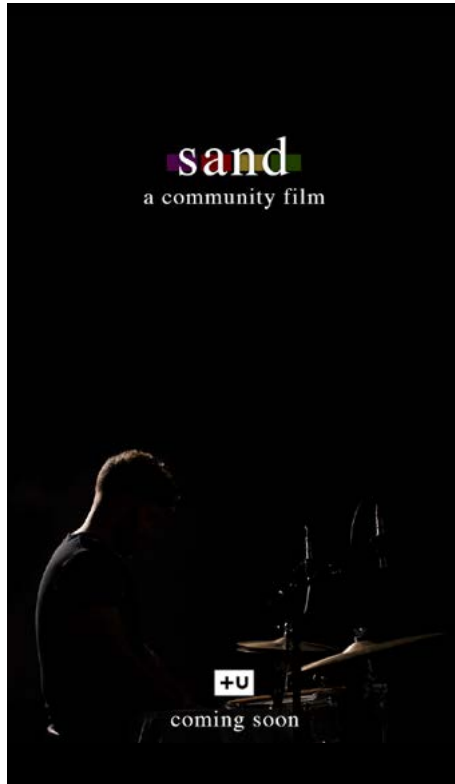
#### TAKING IT BACK AT SOUTH LONDON GALLERY

CLORE STUDIO, SLG, 65 PECKHAM ROAD SE5 8UH | 7PM-9PM

Join John Costi, the SLG's 12th Postgraduate Artist in Residence, for an evening of spoken word and music. Using the idea of rebirth as a starting point, Costi brings together storytelling and community in a relaxed social space. The event will expand on some of the themes explored in his exhibition, Found Football Difficult, on display in the SLG's Fire Station Galleries.

TICKETS £6.00 / £4.00 (member/concession) Book online.

## THURSDAY 15TH JUNE



### FILM

**SAND: A COMMUNITY FILM + KINSHIP LIVE (ACOUSTIC SET)**  
WHIRLED CINEMA, 259-260 HARDESS STREET, SE24 0HN | 7.30PM-10PM

This year marks the 5th anniversary of Community - the debut album by electronic singer, producer and writer Kinship. Sand: A Community Film is an hour-long creative response by Kinship's friends at Wild Dog Blue, who were given the album and free rein to make whatever they wished.

[iamkinship.eventcube.io](http://iamkinship.eventcube.io)  
TICKETS £15

## FRIDAY 16TH JUNE

### COMMUNITY

**LONGFIELD VOICES - FREE COMMUNITY CHOIR**  
LONGFIELD HALL, 50 KNATCHBULL ROAD SE5 9QY  
10AM-11.30AM

Did you know that singing is good for you? Research has shown it can help to lower stress, boost immunity, improve lung function, enhance memory, support mental health and well-being, and help you cope with physical and emotional pain. One of the best things about singing is that you don't have to be good at it to reap the rewards. So why not join this friendly and welcoming community choir, led by Hannah Boxall? It's free and open to everyone, regardless of whether you have any singing experience or not. They are always looking for new members so contact [eliza.infante@longfieldhall.org.uk](mailto:eliza.infante@longfieldhall.org.uk) for further information or just drop in on the day. Refreshments (and guaranteed happiness) are included.

[www.longfieldhall.org.uk](http://www.longfieldhall.org.uk)



## SATURDAY 17TH JUNE

### MUSIC

**SOUTH BY SOUTH EAST**  
DASH THE HENGE | 11AM UNTIL LATE

South By South East is back! Following the success of their Record Store Day event, Dash The Henge and The Old Dispensary bring SXSE back for the Camberwell Arts Festival. From 11am there's instore DJs and acoustic performances from Christafari and Matt Priory, plus newly formed back-to-back selectors Melodian and EDNA, and stripped back performances from The Lone Groover, local legend Misty Miller and newbie Tabitha Avanzato. From 3pm there'll be full bands at the Old Dispensary, as well as Two Tribes beer instore and a Colombian BBQ from Bettys Bakery.

[www.dashthengestore.com](http://www.dashthengestore.com)



### MUSIC

**SONATAS FOR TRASHED VINYL**  
DASH THE HENGE, 348 CAMBERWELL NEW ROAD, SE5 0RW | TIME 4.30PM-5PM

DJ Wafflemeister is a friendly and eclectic Camberwell-based DJ, prone to aimless waffle and mindful blather, with a wide range of musical (and not so musical) tastes all the way from string quartets to sludge core. Join him for an audio-visual extravaganza of vinyl records played in various states of disrepair and wanton destruction - a chaotic and strangely musical mashup of extreme surface noise, pops, skips, jumps and aural wobbles.

[www.mixcloud.com/wafflemeister](http://www.mixcloud.com/wafflemeister)

Dash The Henge Store and The Old Dispensary presents

**SOUTH BY SOUTH EAST**  
"Who needs Austin when we've got Camberwell"

LIVE MUSIC/DJ SELECTORS

**Dash The Henge Store** FROM 11AM  
348 Camberwell New Road London SE5

**The Lone Groover**  
Miles Dee  
Misty Miller  
Christafari DJ  
EDNA DJ  
Matt Priory DJ  
Melodian DJ  
Wafflemeister DJ

**Saturday 17th June**

**The Old Dispensary** FROM 3PM  
325 Camberwell New Road London SE5

**Children of the Pope**  
Kriniks  
Lando Manning  
Morgan Noise  
Neuro Phobic  
Rufus Miller  
Tabitha Avanzato  
White Devil Disco

South By South East returns to celebrate Camberwell Arts Festival with another day of live music and DJs in Camberwell. From 11am @ 11pm at Dash The Henge Store and over the road at The Old Dispensary BBQ by Betty's and beers by Two Tribes.

**CAMBERWELL ARTS FESTIVAL**  
FESTIVAL 10-19 JUNE 2023

THE OLD DISPENSARY

DASH THE HENGE STORE



## SATURDAY 17TH JUNE

### COMMUNITY

#### RUSKIN PARK SUMMER FETE

DENMARK HILL, SE5 9AW | MIDDAY-6PM

Join the Friends of Ruskin Park for a fun-filled day for all the family in one of London's most beautiful parks. Head to the bandstand for live music, performers, arts and crafts, food and drinks, stalls from local groups and more.

[friendsofruskinpark.org.uk](http://friendsofruskinpark.org.uk)



## SUNDAY 18TH JUNE



### COMMUNITY

#### CAMBERWELL SOCIETY'S OPEN GARDENS DAY

34 GROVE LANE, SE5 8ST  
2PM-6PM

Explore some of the wonderful gardens and green spaces in Camberwell at this popular annual event – perfect if you're looking for inspiration for your own garden, want to have a wander outdoors, or just love to nose in your neighbours' gardens. All proceeds support local charities, with tickets, tea and cakes on sale at 34 Grove Lane.

[www.camberwellsociety.org.uk](http://www.camberwellsociety.org.uk)  
ENTRY £5 / £2 (children)







**31ST MARCH-18TH JUNE**

### **MOUNTAINS ARE PAINTED ON GLASS**

**SOUTH LONDON GALLERY, 65 PECKHAM ROAD, SE5 8UH | 11AM-6PM**

This solo exhibition by British-Sri Lankan artist Michelle Williams Gamaker explores race, identity, her love of cinema and the power of storytelling. It premieres a new film work, *Thieves* - a fantasy adventure retelling of *The Thief of Bagdad*. By reimagining two marginalised characters (played by Chinese-American actor Anna May Wong and Indian-born American actor Sabu) in leading roles, this movie within a movie reclaims the story and challenges the racial discrimination of the film industry.

[www.southlondongallery.org](http://www.southlondongallery.org)



**31ST MARCH-18TH JUNE**

### **FOUND FOOTBALL DIFFICULT**

**SOUTH LONDON GALLERY, 65 PECKHAM ROAD, LONDON SE5 8UH | 11AM-6PM**

Experience a playful dive into the memories of artist John Costi in this multi-sensory and immersive exhibition, created over six-months as the South London Gallery's 12th Postgraduate Artist in Residence. Drawing on cultural and personal references from his Cypriot heritage, memories of growing up in north London and time spent in prison, the exhibition takes its title from a quote in one of his childhood school reports. It explores broader issues around men's mental health, how we process anger, and systems of oppression. Please note the audio works in Gallery 2 contain adult content, including strong language and references to sex, drugs and criminal activity.

[www.southlondongallery.org](http://www.southlondongallery.org)

**12TH MAY-11TH JUNE**

### **PECKHAM 24**

**SOUTH LONDON GALLERY, 65 PECKHAM ROAD, SE5 8UH | 11AM-6PM**

Peckham 24, the south east London festival of photography, returns to SLG's Fire Station for a second year. Taking the protest slogan "My body, my choice" as its starting point, Peckham 24's programme aims to explore a wide range of responses to the body as a personal and political canvas. Two solo exhibitions by Marvel Harris and Fion Hung Ching Yan reflect on this theme of body language.

[www.southlondongallery.org](http://www.southlondongallery.org)



**29TH MAY-24TH JUNE**

### **LUKE TEALE**

**PECKHAM PELICAN, 92 PECKHAM RD, SE15 5PY | TUES-SUN; 11AM-11PM (MIDDAY-6PM ON SUNDAYS)**

In painting, Luke Teale finds a way to frame his sensory experiences of the world. Through simple aspects like colour, texture and shape, he produces space in which the viewer can project their own ideas and interpretations - allowing the paintings to remain ambiguous and abstract so they suggest everything, but describe nothing. The paintings shown in this exhibition offer an insight into his process: from abstractions of memories of place, to automatic painting driven by the rhythm and atmosphere of music, his way of working constantly shifts between the conscious and subconscious mind.

[instagram.com/luketeale\\_\\_\\_artist](https://www.instagram.com/luketeale___artist)

**10TH-18TH JUNE**

### **NOT FOR SALE**

**AN ART JOURNEY THROUGH CAMBERWELL | OPEN 24/7**

Get off the beaten track and explore Camberwell's residential streets in this group exhibition sponsored by Hunter's estate agent. Showcasing the work of 25 artists, each with a connection to Camberwell, it's an opportunity to get out and explore the local area as well as discovering some great new art.

Participating artists:

Paul Ashford, Emma Nicholson Butcher, Agustin Coll, Euan Cunningham, Sally Ann Cutler, Alice Pik-Kwan French, Susan Gordon, Keith Gretton, Lynette Hemmant, Tugce Karapinar, Andrew Matheson, Riccardo Matlakas, Jodie Mudaliar, Ailsa Munro, Lo Parkin, Zoe Scott, Carole Shemwell, Gill Smith, Florence Goodhand Tait, Patricia Uter, Louise Ward, Grace Westerdale, Steve Wilde, Laura Willis, John Woodman

[www.camberwellarts.org.uk](http://www.camberwellarts.org.uk)





**10TH JUNE-18TH JUNE**

**SHOWCASE**

CAMBERWELL GREEN RAILINGS, SE5  
OPEN 24/7

Celebrate work by local students, who have recycled old banners to create an amazing group exhibition on this year's festival theme. Participating schools: Brunswick Park Primary School, Charter School, Highshore School, St George's Primary School, Sacred Heart School, Spa School & The Villa School.

**10TH JUNE-18TH JUNE**

**PANT-O-MIME POODLE**

THE TIGER, 18 CAMBERWELL GREEN  
SE5 7AA | VIEWABLE 24/7

Laura Cronin (aka Bumble & Earwig) takes inspiration from Victorian pantomime performer Charles Lauri Junior - an early method actor, who painstakingly studied the movements of animals he was cast to play. Her larger-than-life poodle costume - fresh from an appearance at the festival launch - pays homage to one of his best-known roles (pictured right), recreating his likeness in felted wool and rich fabrics to convey the sumptuous feeling of Victorian theatre at its finest.

[www.laura-cronin.com](http://www.laura-cronin.com)



**10TH JUNE-18TH JUNE**

**DAN LENO**

OLD MUSIC HALL SITES THROUGHOUT  
CAMBERWELL

Sarah Doyle adds Dan Leno to her roster of Camberwell music hall legends. A local resident from 1898-1901, Leno influenced comedy legends such as Stan Laurel and Charlie Chaplin. He also transformed the role of pantomime dame, from minor character to the main attraction. He returned here following a nervous breakdown and was treated at Camberwell House Asylum with "peace and quiet and a little water colouring".

[www.sarah-doyle.com](http://www.sarah-doyle.com)



**10TH JUNE-18TH JUNE**

**IMPERIAL GARDENS LONDON 1990s  
SITES ALONG CAMBERWELL ROAD**

Tucked away beneath the railway arches of Camberwell Road, Imperial Gardens was a '90s nightclub that kick-started the music and literary careers of Marsha Ambrosius, Patrick Augustus and Big Brovaz, amongst others. Massive Attack played on stage, as did Daft Punk and Mica Paris. Run by local residents, it was a space that was also accessible to the community during the day. Exhibited at the site of this legendary venue, Rachel Megawhat's poster trail is taken from her recent book, published by Café Royal Books (and available to buy at Dash the Henge).

[www.caferoyalbooks.com/england/rachel-megawhat-imperial-gardens-london-1990s](http://www.caferoyalbooks.com/england/rachel-megawhat-imperial-gardens-london-1990s)



**10TH JUNE-18TH JUNE**

**SHOWTIME BY CRAFTY OLD PEOPLE**

SOUTHWARK PENSIONERS CENTRE,  
305-307 CAMBERWELL ROAD, SE5 0HQ

View 'Showtime' in Camberwell 24 hours a day. A window display painted by members of Crafty Old People - many of whom have lived all their life in the area - celebrates local lived-experience, memories of music hall, local celebrities and stars of the big screen with a connection to Camberwell. Crafty Old People are a weekly creative arts and crafts group that runs Tuesday mornings at Southwark Pensioners Centre facilitated by Drawing People Together. Enjoy looking at the window or, if you are 50+, get in touch and get involved. Email [info@southwarkpensioners.org.uk](mailto:info@southwarkpensioners.org.uk) or call 020 7708 4556.

[instagram.com/drawing.people.together](https://www.instagram.com/drawing.people.together)  
[instagram.com/swarkpensioners](https://www.instagram.com/swarkpensioners)



UNTIL OCTOBER 2023

**SHE IS STILL ALIVE!  
BY ROSA-JOHAN UDDOH**

BASKETBALL COURT, BRUNSWICK PARK  
SE5 7RH; VIEW DURING PARK HOURS

Commissioned by The Bower, Rosa-Johan Uddoh's public artwork celebrates the life and work of Brunswick Park resident Una Marson (1905-65). Marson was a British-Jamaican activist, radio producer, presenter and poet renowned for her pioneering anti-colonial, anti-racist, feminist and pan-African activism and the first Black radio producer at the BBC in 1942. The flags feature the quote: "I hope you remember a girl by the name of Una Marson... she is still alive!" This is taken from Marson's letter requesting a reference for her work at the BBC (sent years after her employers aided her forced deportation to Jamaica). She is Still Alive! is supported by Southwark Council's Black History Month Grant and Arts Council England.

[www.thebower.org.uk](http://www.thebower.org.uk)



13TH JUNE-17TH JUNE

**BA SHOW 2023**

CAMBERWELL COLLEGE OF ARTS  
45-65 PECKHAM ROAD, SE5 8UF  
TUES-FRI; 11AM-8PM | SAT; 11AM-5PM\*  
(final entry 15 minutes before closing time)

Camberwell is home to a world-renowned art college, and this annual degree show is an opportunity to check out (and purchase) artworks by the stars of the future. It features work by graduating students from the following courses: BA Drawing; BA Graphic Design; BA Illustration; BA Interior & Spatial Design; BA Painting; BA Photography; BA Sculpture; Graduate Diploma Illustration.

[www.arts.ac.uk/colleges/camberwell-college-of-arts/whats-on/show](http://www.arts.ac.uk/colleges/camberwell-college-of-arts/whats-on/show)

17TH JUNE-18TH JUNE

**CAMBERWELL OPEN STUDIOS  
WEEKEND**

MULTIPLE LOCATIONS

Camberwell artists create work in extraordinary places, from converted bus garages to garden sheds. Our annual Open Studios weekend provides an opportunity to visit local artists in their studio, purchase original art and even commission your own. Entry is free and all studios are open from 12-6pm, unless otherwise indicated.

[www.camberwellarts.org.uk](http://www.camberwellarts.org.uk)



**OPEN  
STUDIOS**

**SAT 17TH & SUN 18TH JUNE**

## clubland studios

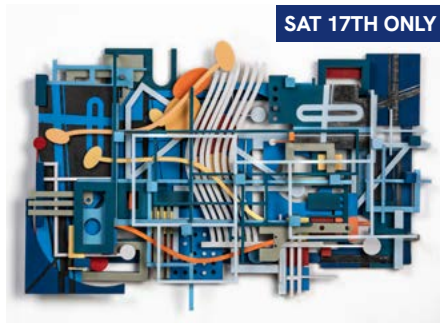
Walworth Methodist Church, 54 Camberwell Road, SE5 0EW



### NEL BURKE

Nel's work is mostly collage, with some watercolour, drawing and recently mono printing.

[www.felixhwilkinson.co.uk/nel-burke](http://www.felixhwilkinson.co.uk/nel-burke)



### LESLEY HILLING

Lesley's work is about memory, sustainability and the passage of time.

[www.lesleyhilling.co.uk](http://www.lesleyhilling.co.uk)

#### Need help finding us?

[www.youtube.com/watch?v=cnvRex4am6U&t=6s](https://www.youtube.com/watch?v=cnvRex4am6U&t=6s)



### ITTIRAWEE CHOTIRAWEE

Ittirawee Chotirawee is a painter, creating dynamic, colourful abstract paintings in various sizes.

[instagram.com/ittirawee\\_chotirawee](https://www.instagram.com/ittirawee_chotirawee)

## coldharbour studios

26-34 Southwell Road, SE5 9PG



### WARREN DENNIS | STUDIO 4

Warren Dennis is a multi-disciplinary artist who uses both traditional and readymade materials to challenge the viewer and explore the status of the readymade.

[instagram.com/warren\\_dennis2](https://www.instagram.com/warren_dennis2)



### STUDIO CROSS | STUDIO 28

Studio Cross is London based mixed-media artist Gina Cross. She works on paper, wood and copper with many materials being reclaimed.

[www.studiocross.co.uk](http://www.studiocross.co.uk)  
[instagram.com/studiocross\\_london](https://www.instagram.com/studiocross_london)



### JANE DILLON | STUDIO 21

Along with older work Jane Dillon is displaying a new series of large paintings designed to bring attention to the changing light of any day.

[janedillon.com](http://janedillon.com)



### ORIGINAL AND FABULOUS | STUDIO 7

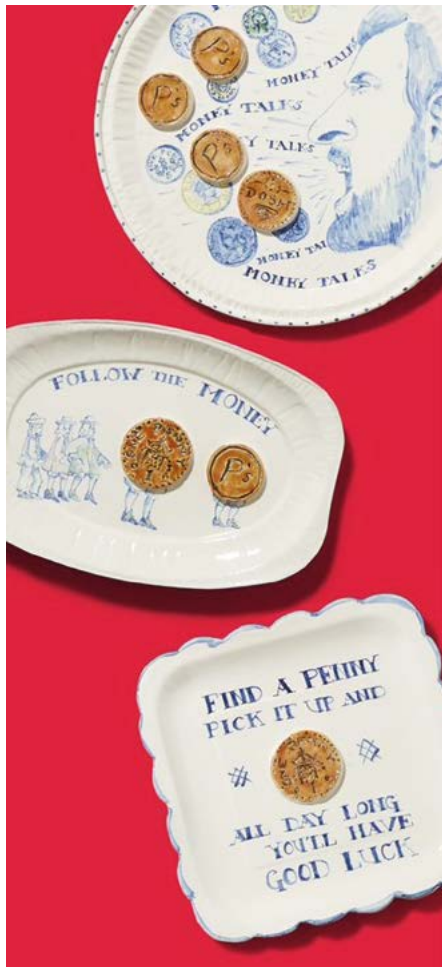
Sue is a designer and maker of original fabric designs, fabulous lampshades and lights, and gorgeous little pieces of fabric art made into bags.

[www.originalandfabulous.com](http://www.originalandfabulous.com)



## coldharbour studios

26-34 Southwell Road, SE5 9PG



### HELEN CARR | STUDIO 15

Working predominantly in ceramic and textile, Helen creates humorous but surreal and unsettling objects and images. She finds inspiration in C18 South London Delftware pottery as a visual vehicle for everyday puns, innuendo and the absurd.

[instagram.com/helencarrartist](https://www.instagram.com/helencarrartist)



### HARRIET PORTER | STUDIO 19

Harriet paints solitary reflective objects from observation.

[www.harrietporter.com](http://www.harrietporter.com)



### ANDREW MATHESON | STUDIO 21

Andrew paints in oil paint or crayon. He starts with or without a plan. When he loses his way, he reminds himself that there wasn't a plan in the first place. Too late he makes a plan.

[instagram.com/andrewzmatheson](https://www.instagram.com/andrewzmatheson)

## coldharbour studios

26-34 Southwell Road, SE5 9PG



### MIRANDA RHYS | STUDIO 12

Miranda paints everyday objects and transforms them into something beautiful and unique.

[www.mirandarhys.co.uk](http://www.mirandarhys.co.uk)



### DIANA ZRNIC

Diana creates series of paintings and sculptures, where one work informs the next - and brings the strange and the common into co-existence.

[www.dianazrnic.myportfolio.com](http://www.dianazrnic.myportfolio.com)

## warrior studios

Unit 1, Valmar Trading Estate,  
Valmar Road, SE5 9NW



### CLARE COHEN

Clare is a figurative artist whose work explores reality, emotion and imagination.



### SARAH WOOLFENDEN

Sarah's work is influenced by the landscape of far west Cornwall - hills, horizons, jetties and boats. The starting point is often a quick sketch, containing the essence of an idea, and the eventual form emerges through the process of making.

[www.sarahwoolfenden.com](http://www.sarahwoolfenden.com)

## vanguard court

36-38 Peckham Road, SE5 8QT



### ANGELIKA BERNDT | STUDIO 205

Brought up in Brazil, the country's vibrance, light, colours and culture has greatly influenced Angelika's aesthetics, experiential colour schemes and temperamental movement.

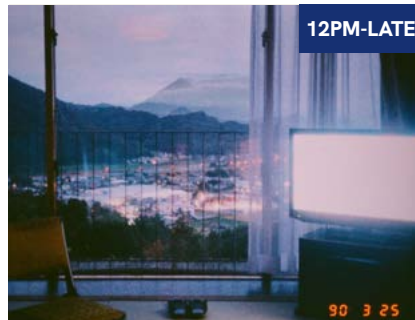
[www.angelikaberndt.com](http://www.angelikaberndt.com)



### DANIEL CRAWSHAW | STUDIO 4G

Daniel creates paintings following explorations of mountains. His distinctly atmospheric works of varying scale capture both personal attachment and meteorological change.

[instagram.com/daniel.crawshaw1](https://www.instagram.com/daniel.crawshaw1)



### AFROPEAN STUDIOS | STUDIO 1K

Johny Pitts is an award winning writer, photographer and broadcaster. He is the author of the book Afropean: Notes from Black Europe, and has held solo exhibitions at Foam, Amsterdam, Stills, Edinburgh, and The Photographer's Gallery, London.

[www.johnypitts.com](http://www.johnypitts.com)



### CHRIS KEENAN | STUDIO 7C

Chris Keenan makes wheel thrown porcelain pots for domestic spaces. For use and decoration.

[www.chriskeenan.co.uk](http://www.chriskeenan.co.uk)



### CATRIN HOWELL | STUDIO 4A

Animals and the roles they play in mythology is a constant theme in Catrin's work.

[www.catrinhowell.com](http://www.catrinhowell.com)



### SUN KIM | STUDIO 4A

Sun Kim produces a range of functional ware with a distinct visual language exploring traditional and contemporary aesthetics within her work.

[www.sunkimceramics.com](http://www.sunkimceramics.com)



### WILD & KING | STUDIO 19

Wild & King creates unique, sustainable, everlasting floral installations and arrangements for homes and businesses.

[www.wildandking.co.uk](http://www.wildandking.co.uk)



## vanguard court

36-38 Peckham Road, SE5 8QT



### GEORGIA COCKERILL JEWELLERY | STUDIO 9D

Working from a shared studio in Camberwell, Georgia uses precious metals and gemstones to craft jewellery based on plants, flowers and other natural forms.



### CATHERINE-MARIE LONGTIN | STUDIO 7N

A French-Canadian quilt maker and textile artist, Catherine's designs - from simple assemblages to intricate hand sewn pieces - are inspired by minimalist abstract art.

[catherinemarielongtin.com](http://catherinemarielongtin.com)



### JONATHAN LAWES | STUDIO 208

Jonathan Lawes is an artist and designer based in south east London, experimenting predominantly with the silkscreen printing process.

[www.jonathanlawes.com](http://www.jonathanlawes.com)



### LAURA MCKINLEY GLASS | STUDIO 11A

An interest in play and the inviting qualities of glass are strong motifs in Laura's work. Using hot glass she directly contradicts the fragile material in which the objects are created by inviting interaction and, at the same time, exploring form, texture and the illusion of space.

[www.lauramckinley.co.uk](http://www.lauramckinley.co.uk)  
[instagram.com/lauramckinleyglass](https://www.instagram.com/lauramckinleyglass)



### CHARLOTTE MOORE | STUDIO 2DE

Working across art & architecture, Charlotte's practice weaves sculptural botanical design into interior architectural ceramic elements and exterior façades by investigating soft form, ephemerality, plant inhabitation & methods of drafting with plants as multi-scalar tools.

[instagram.com/charlotte.l.moore](https://www.instagram.com/charlotte.l.moore)



### LONG LANE SILVER | STUDIO 9D

Mary Lojkin makes jewellery from sterling silver, adding vitreous enamel for colour and contrast. Sinuous lines and negative spaces are set against clean geometric outlines.

[instagram.com/marylojkin](https://www.instagram.com/marylojkin)



### GILL ROCCA | STUDIO 7G

Contemporary landscape painter working in oil. Showing recent works including miniatures on cast resin and larger circular paintings on wood.

[www.gillrocca.com](http://www.gillrocca.com)

## vanguard court

36-38 Peckham Road, SE5 8QT



### SUE WAINWRIGHT SILVER | STUDIO 9D

Sue makes jewellery and small boxes in silver and semi-precious stones.

[www.suewainwrightsilver.co.uk](http://www.suewainwrightsilver.co.uk)



### CARINA CISCATO | STUDIO 7C

Thrown and assembled porcelain.

[www.carinaciscato.co.uk](http://www.carinaciscato.co.uk)



### MARIE TRICAUD | STUDIO 201

Marie is a designer and ceramicist. She uses primarily stoneware to create clean, geometrical shapes with a neutral palette of glazes, using a combination of slab building and wheel throwing. She likes to explore how elementary patterns can create complex and distinct forms.

[instagram.com/marietrcd](https://www.instagram.com/marietrcd)



### FLUX STUDIOS | STUDIO 2F

Home to the Flux Collective, Flux Studios is a specialist jewellery workshop, and this weekend you'll get the chance to see us at work. Watch the magic! Ask us questions, see how we can transform your jewellery dreams into precious, wearable form.

[instagram.com/fluxstudioslondon](https://www.instagram.com/fluxstudioslondon)

## independent studios

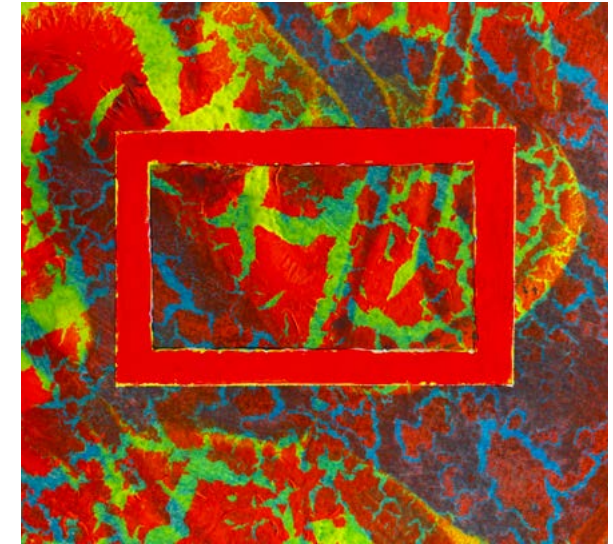
Various locations

### PAUL ASHURST

85 Flaxman Road,  
SE5 9DX

Paul Ashurst has shown his paintings nationally and internationally. His work has simultaneously covered styles from realism to abstract, with a sense of heightened colour on paper and canvas.

[instagram.com/paul\\_ashurst\\_](https://www.instagram.com/paul_ashurst_)



### MICHELLE BAHARIER

53 Gables Close, SE5 7QE

Colourful and expressive paintings, storytelling, photography, installations and digital media, shaped by art movements such as Surrealism, Raw Art and Expressionism.

[www.michellebaharier.co.uk](http://www.michellebaharier.co.uk)



### TUESDAYS CHILD

7 Graces Mews, SE5 8JF

Grace creates paintings and sculptures exploring natural forms of nature through flowing shapes and beautiful colours. Grace is using these designs to inspire her home-wears collection, creating functional, usable, interactive works.

[www.tuesdayschild.studio](http://www.tuesdayschild.studio)



## independent studios

Various locations



### BILL DALTON

45 Grove Lane, SE5 8SP

Fine Bookbinder. Contemporary presentation using traditional bookbinding techniques.

[billdalton45@gmail.com](mailto:billdalton45@gmail.com)

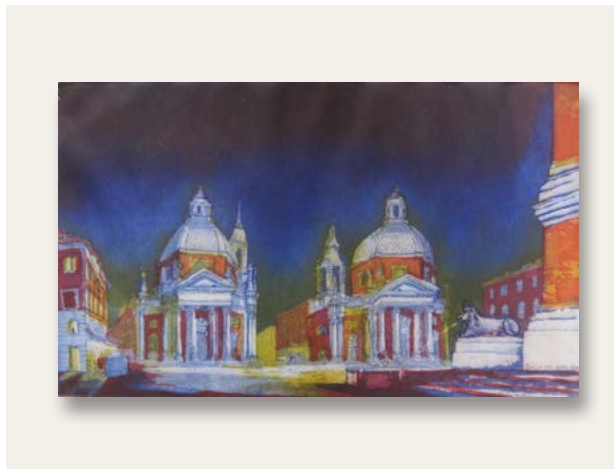


### DAVID HOPKINS

138b Crystal Palace Road, SE22 9ER

David Hopkins is a figurative, realist painter of portraits, still lifes and other striking, richly-coloured work. He graduated from Central St Martin's, London in 1996.

[www.davidhopkinspaintings.co.uk](http://www.davidhopkinspaintings.co.uk)



### PETER ANTHONY COOKE

Ground Floor Flat,  
97 Camberwell Grove,  
SE5 8JH

Peter trained as an architect, and hopes that his watercolour paintings and etching prints express a personal love of architecture, interiors and townscape.

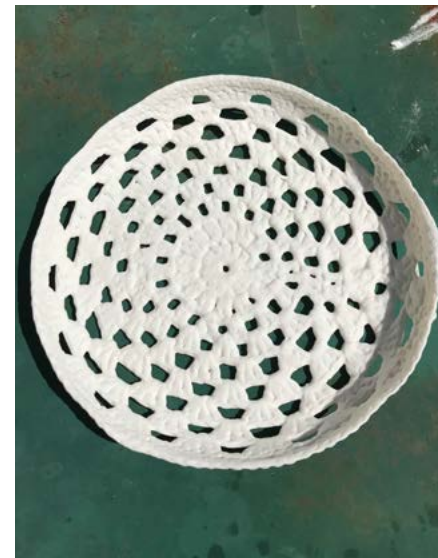
[www.petercooke.co.uk](http://www.petercooke.co.uk)



**LYNETTE HEMMANT**  
35 Camberwell Grove,  
SE5 8JA

Traditional painting with a contemporary eye, mainly of the garden here in Camberwell, still life in the studio and her time in Venice. 25 years in illustration, good quality drawing and has earned a bad living with brush and pen all her life.

[lynettehemmant.com](http://lynettehemmant.com)



### EUNICE DE PASCALI CERAMICS

Studio 194, Arches Peckham

Hand made crochet dipped in porcelain slip.

[www.studio194.co.uk](http://www.studio194.co.uk)



### HUGH LEE

118 Grove Lane, SE5 8BJ

Untaught but constantly experimenting, in 30 years of retirement Hugh created a multifarious range of paintings, and assemblages using found objects and oddments. Many are abstract, but often quirky or with a witty reference to reality.

[www.hughlee.co.uk](http://www.hughlee.co.uk)

## independent studios

Various locations



### ANGELA LUCAS

Ground Floor, 90 Camberwell Road,  
SE5 0EG

Broadly, Angela's subject matter is landscape and interiors, but what emerges is something tougher and more brutal than might be suggested by the romanticism of those genres.



### BEG4CRED

Jazz Live at the Crypt, SE5 8RB

Also showing at the Crypt for Open Studios is Beg4cred, an intuitive artist working in many different forms. All of his work, across all mediums, are an attempt at invoking curiosity, inspiration and peacefulness.

[instagram.com/beg4cred](https://www.instagram.com/beg4cred)



### HAMLEY JENKINS

Jazz Live at the Crypt, St Giles Church,  
Camberwell Church Street, SE5 8RB

The resident artist at Jazz Live at the Crypt, Hamley captures the likeness of musicians in charcoal and chalk on paper, with the full impact of witnessing music played live given final expression in her paintings.

[instagram.com/hamleyjenkins](https://www.instagram.com/hamleyjenkins)



### URBAN POTTERS

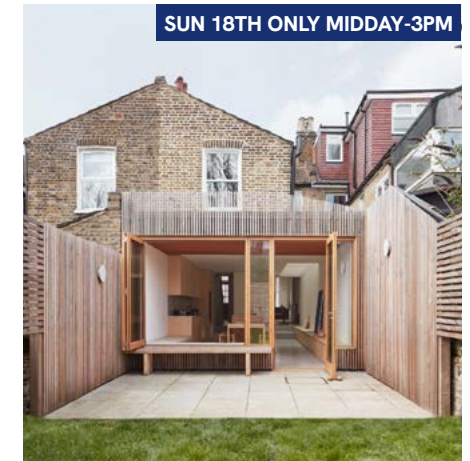
Unit E, 4 Scena Way, SE5 0BH

We are a collective of potters offering a range of functional and sculptural pieces. All of our work is handmade and fired to stoneware temperatures, so our tableware is oven proof and dishwasher safe.

[www.urbanpotters.com](http://www.urbanpotters.com)



SUN 18TH ONLY MIDDAY-3PM



### POROBAN

43 Madron Street, SE17 2LE

Poroban are sustainable architects and makers based off Old Kent Road that work within the realms of architecture, urban design, furniture making and installations.

[www.poroban.com](http://www.poroban.com)

### JOHN WOODMAN

79 Coleman Road,  
SE5 7TF

An English painter, John has exhibited widely - most recently in Westminster Abbey and Robinson College, Cambridge. Originally from Durham, he graduated from the Glasgow School of Art in 2006 and now lives and works in Camberwell.

[www.johnwoodman.com](http://www.johnwoodman.com)



## festival venues

1. Brunswick Park
2. Camberwell College of Arts
3. Camberwell Green
4. Camberwell Society's Open Gardens
5. Dash the Henge
6. Golden Goose Theatre
7. Longfield Hall
8. Myatt's Fields Park
9. The Old Dispensary
10. Peckham Pelican
11. Peckham Road Fire Station (SLG)
12. Ruskin Park Denmark Hill
13. South London Gallery
14. Southwark Pensioners Centre
15. St Giles Church
16. Theatre Peckham
17. The Tiger
18. Whirled Cinema

## open studios

See entries for full details.

19. Clubland Camberwell Road (P22)
20. Coldharbour Studios Southwell Road (P23-25)
21. Vanguard Court Peckham Road (P26-30)
22. Warrior Studios Valmar Road (P25)
23. Paul Ashurst Flaxman Road (P31)
24. Michelle Baharier Gables Close (P31)
25. Tuesdays Child Graces Mews (P31)
26. Peter Anthony Cooke Camberwell Grove (P32)
27. Bill Dalton Grove Lane (P32)
28. Eunice De Pascali Arches Peckham (P33)
29. David Hopkins Crystal Palace Road (P32)
30. Lynette Hemmant Camberwell Grove (P33)
31. Hamley Jenkins & Beg4cred St. Giles Church (P34)
32. Hugh Lee Grove Lane (P33)
33. Angela Lucas Camberwell Road (P34)
34. Urban Potters Scena Way (P35)
35. Poroban Madron Street (P35)
36. John Woodman Coleman Road (P35)



Now in its 29th year, the Camberwell Arts Festival has grown out of and celebrates the vibrant artistic community in Camberwell. It is delivered as a partnership between local artists, residents and organisations, and is co-ordinated by Camberwell Arts.

We would like to thank the many artists, cultural organisations, community groups, businesses, volunteers and local residents who have helped us put together this year's festival. We've had a great time and couldn't have done it without you!

We would also like to thank the following organisations for their financial support:

- » The Camberwell Society
- » Hunters
- » Southwark Council (through the Neighbourhoods Fund and the Cultural Celebrations Fund)



CAMBERWELL



THE  
CAMBERWELL  
SOCIETY

SE5 FORUM  
FOR CAMBERWELL



supported by



BROCHURE DESIGN  
Colleen Burns



CAMBERWELL  
ARTS FESTIVAL  
10-18 JUNE 2023

# IT'S SHOWTIME!



# 10TH-18TH JUNE

[camberwellarts.org.uk](http://camberwellarts.org.uk)



# CAMBERWELLARTS FESTIVAL 10-18 JUNE 2023

---

# ROLL UP ROLL UP!

---

## THE ANNUAL CAMBERWELL ARTS FESTIVAL IS BACK IN TOWN

Join us for an all-singing, all-dancing celebration as we take inspiration from the area's rich music hall heritage to shine a spotlight on local artists and performers today. From dog shows to degree shows, silent cinema to showtunes, we invite you to explore Camberwell's eclectic cultural scene over 9 amazing days.

[camberwellarts.org.uk](http://camberwellarts.org.uk)

supported by

*Southwark*  
Council  
southwark.gov.uk